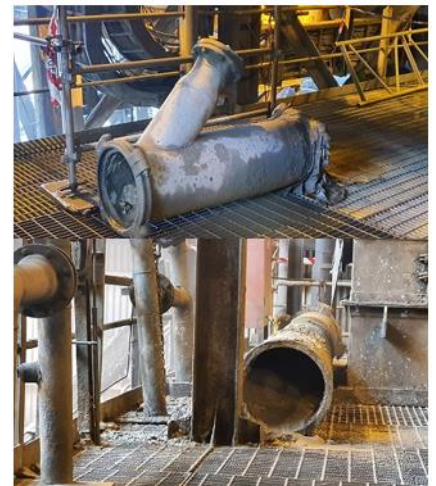


Significant Incident Alert

Type of Incident	Discharge Spools Collapse at Column Cell 2
Key Issues	Pipe Support Failure & Stored Weight
SAP Incident No	Incident ID 94773
Date & Time	Monday 25 th July, 2022 @ 12.00pm
Location	Mill Flotation Building, Folomian
Injury	Nil

DESCRIPTION

On 25th July 2022 at approximately 12.00pm, a steel spool pipe on the discharge line from column cell 2 collapsed. Approximately 4 hours later, a separate section of poly pipe on the same discharge line collapsed (15m away from the first).



There were a lack of pipe supports in the pipeline and several existing pipe supports had failed through corrosion. The pipeline had additional weight due to the accumulation of settled process solids.

LESSONS

- ❑ Formal structural inspections must also consider pipe supports.
- ❑ Ensure all identified risks requiring attention are risk ranked and logged in the Structural Remediation Register.
- ❑ Identified hazards/failures for critical equipment/structures within the plant are to be escalated immediately.

ACTIONS

- ❑ Review the design of existing pipe clamps and hanging supports for its suitability.
- ❑ Immediately inspect the condition of all pipe supports within the Process Plant.
- ❑ Update the Structural Assessment program to include pipe supports.
- ❑ Development and instigation of pipeline flush procedure.

Greg Moore

General Manager Processing

Business Unit::	Status:	Issued:	Page 1 of 1
Processing	Approved	16/08/2022	Business Confidential