

Prevent the spread of COVID-19 in the workplace



BREAK THE CHAIN - GET VACCINATED
Vaccination helps to protect us all from COVID-19.



If you start to feel unwell on site or before returning to site, advise your Supervisor and the medical team IMMEDIATELY.



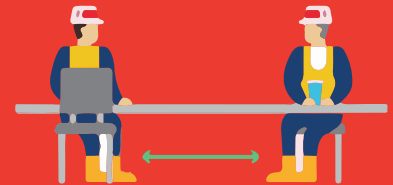
Maintain hand hygiene. Wash your hands thoroughly and frequently, for at least 20 seconds with soap and water, throughout your shift, or use hand sanitizer. Wash your hands on entry to and exit from aircraft, buses, work areas, vehicles, mobile equipment and common areas.



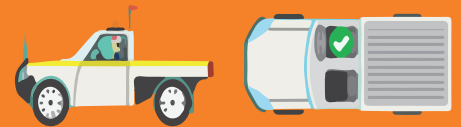
Avoid close contact with other people.



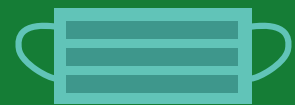
Wipe down frequently used surfaces and items with disinfectant regularly throughout the day.



Maintain social distance of at least 1.5 metres when working and during breaks.



Maintain social distance in mobile equipment, vehicles and when in common areas.



If social distancing is not possible, wear a face mask at all times.



If possible and SAFE, wear gloves to reduce contact with surfaces.



Do you have access to products to clean tools and equipment, including mobile equipment, vehicles and fixed plant before and after use? Are you cleaning tools and equipment before and after each use?