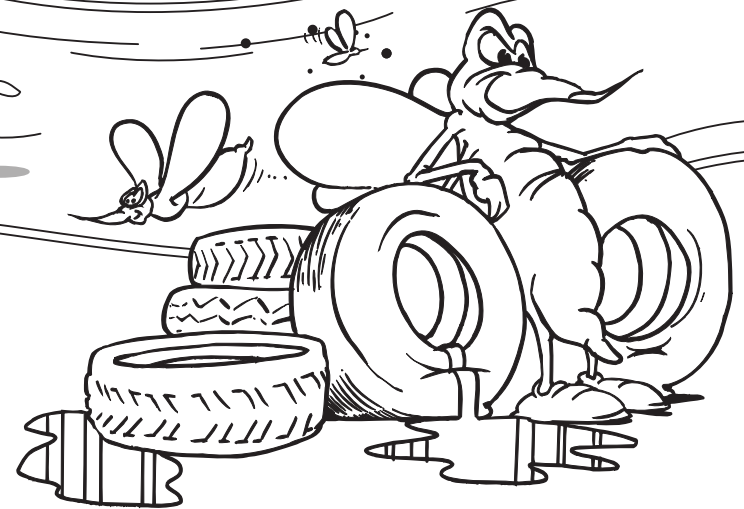
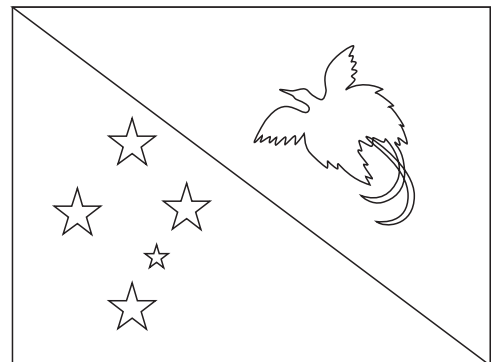


**MALARIA AWARENESS**







 **OK TEDI  
MINING**

**MALARIA AWARENESS**

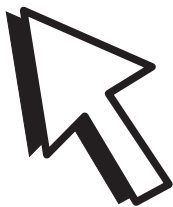
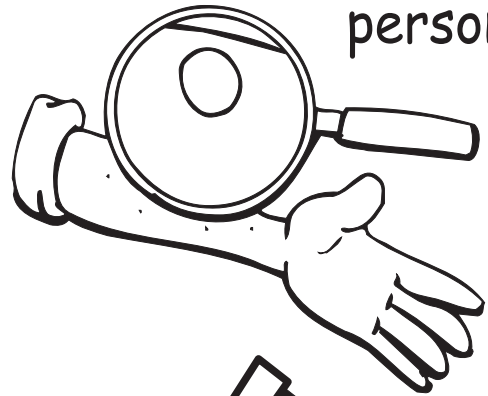
Parasites are transferred through mosquito saliva.

Parasites multiply in the human liver and bloodstream causing malaria.

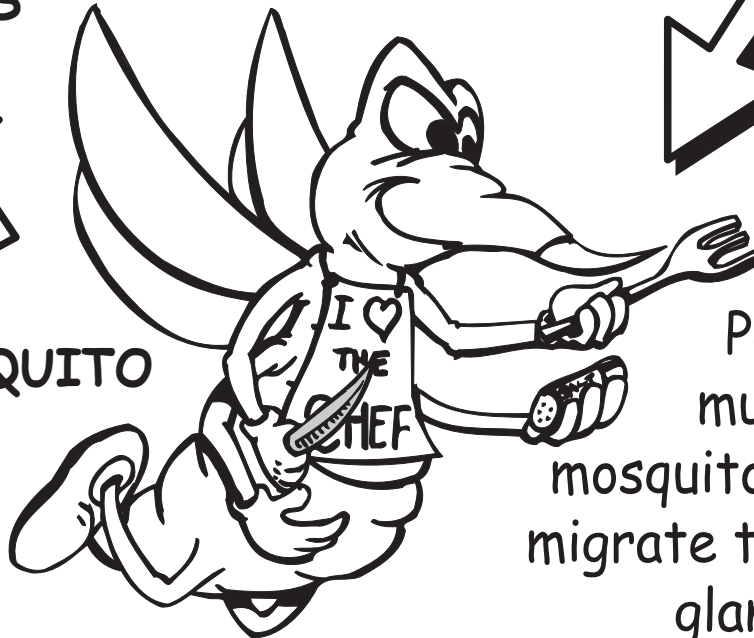
Mosquito bites infected person.



PARASITES



MOSQUITO



Parasites multiply in mosquito gut and migrate to salivary glands.