

SAFETY WEEK 2020:

SAFE ROADS AND CONDITIONS

Driving or operating equipment is a high risk task. At OTML the risk can be higher due to:

- Environmental conditions (e.g. fog, wind, rain, floods, landslides)
- Road conditions (changing mining routes, unsealed/gravel, heavy loads on mine roads, descending roads, road design).

HAZARDS

Hazards can be grouped into three main areas:

- Driver Hazards: Swerve or stop unexpectedly, skid from tyres not gripping the road, driving too fast for conditions, forced off road by other traffic
- Road Design and Maintenance Hazards: Narrow roads, tight turns, poor line of site, surface wear and damage, adverse conditions (wet, poor lighting, wind)
- Traffic Management Hazards: Drivers not following road rules and speed limits, incorrect park-up, inadequate separation of vehicles and pedestrians, animals on road.

CONTROLS

Key controls include:

- Roads are designed, constructed, inspected and maintained by competent and authorised persons.
- Signposting, signalling, surface marking, lighting and barrier protection of equipment and adjacent work areas are provided, as identified by a risk assessment.
- Where possible pedestrians are segregated from motorised vehicles and heavy and light vehicles are also be separated.



BE THE CONTROL NOT THE HAZARD

- Drive to conditions (weather and road conditions)
- On unsealed / gravel roads:
 - stay on tracks
 - increase distance between vehicles
 - be aware of reduced tyre traction
 - be ready for skids
- In dry, dusty conditions:
 - windows up, air con on recycled air

- Slopes:
 - engage correct low gear before slope
 - chock wheels when parking

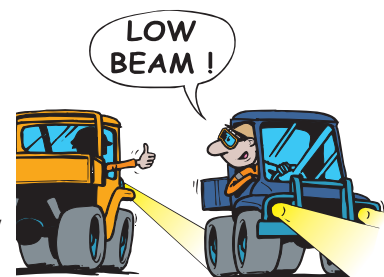


- Restricted vision:
 - use mirrors, horn and spotters
 - drive with lights on

- Wet weather:
 - do not drive in deep water
 - keep wheels on hard ground
 - increase distance between vehicles
 - release accelerator but do not brake if you start to skid

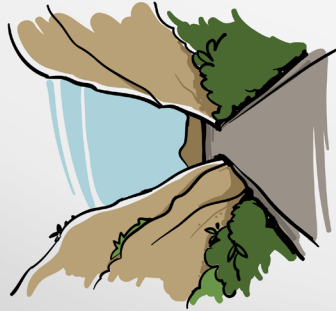


- Night Driving:
 - do not drive at night if possible
 - use high beam if no oncoming traffic, no fog or hard rain

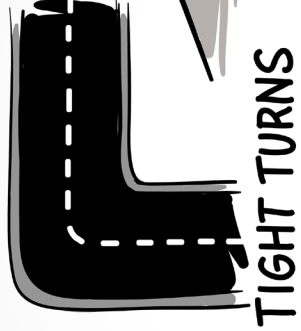


- Separation:
 - observe separation requirements for light and heavy vehicles and vehicles and pedestrians
 - do not enter an exclusion zone unless authorised
 - as a pedestrian, use designated crossings and walkways
 - report missing or damaged assets, such as signs, lights, mirrors, barricades, etc.

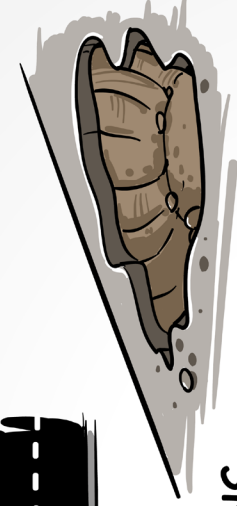
TAKE EXTRA CARE WHEN ROADS AND CONDITIONS ARE NOT IDEAL



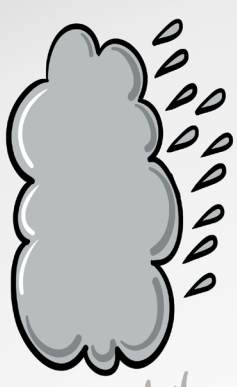
**NARROW ROADS POOR LINE OF SIGHT/
OBSTRUCTED VIEWS**



TIGHT TURNS

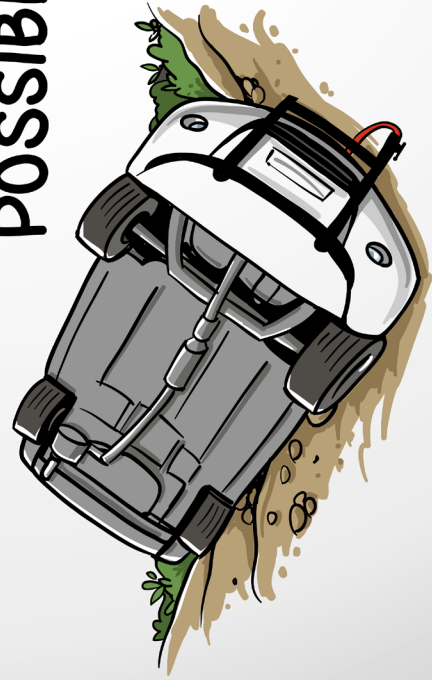


**POTHLES/
UNEVEN ROAD
SURFACES**

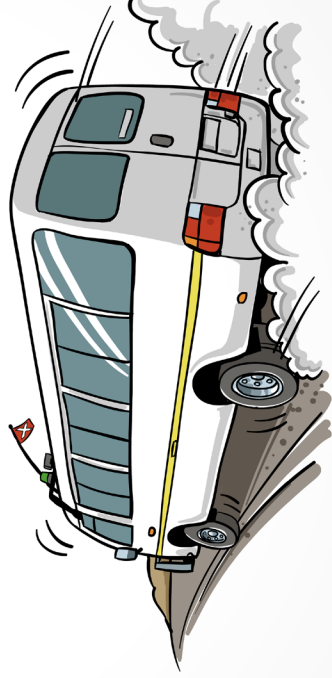


**ADVERSE
CONDITIONS**

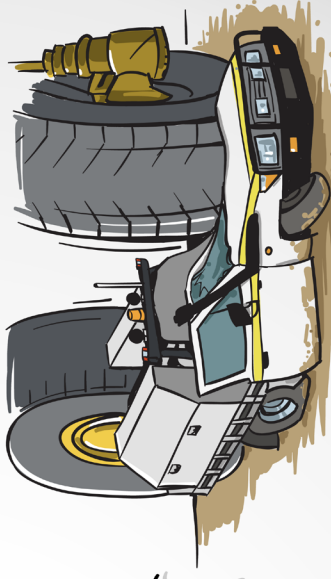
POSSIBLE RISKS & CONSEQUENCES



ROLL-OVER



LOSS OF CONTROL



VEHICLE COLLISION